



700 Series



800 Series



T Series



C Series



VR Series



Marine



O

C

B

A

R

Brought to you by:
Robert's Diesel Works Inc.
906 West Gore St.
Orlando, Fl. 32805
407 246-1597

CRANES

Brought to you by:
Robert's Diesel Works Inc.
906 West Gore St.
Orlando, Fl. 32805
407 246-1597



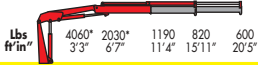
JABCO

700 Series : 13,300 - 46,300 Ft - Lbs

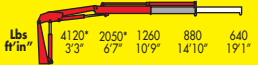
702/1S



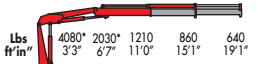
702/2S



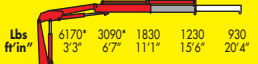
702K/1S



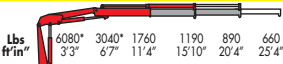
702K/2S



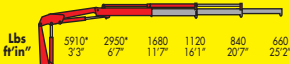
703/1S



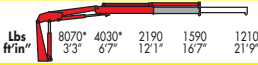
703/2S



703/3S



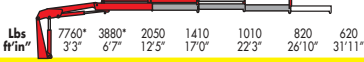
704/1S



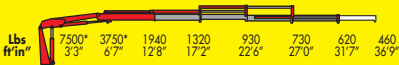
704/2S



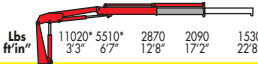
704/3S



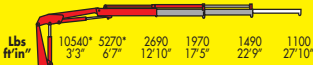
704/4S



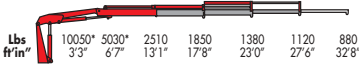
705/1S



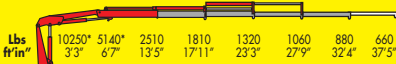
705/2S



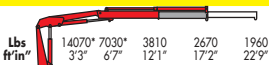
705/3S



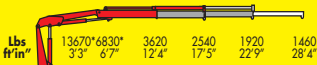
705/4S



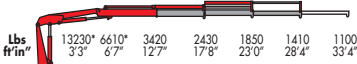
706/1S



706/2S



706/3S

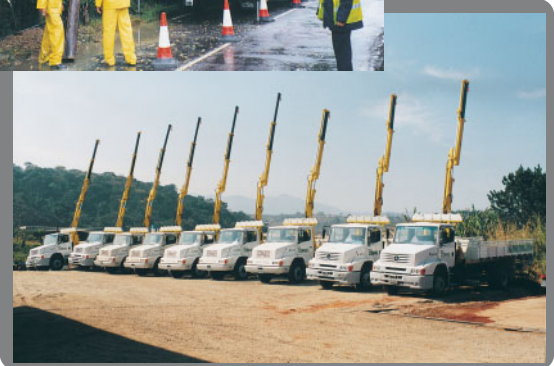


*) Theoretical lifting capacity

Brought to you by:
Robert's Diesel Works Inc.
906 West Gore St.
Orlando, FL 32805
407 246-1597

S = Number of hydraulic extensions, /3S - three extensions
K = Compact

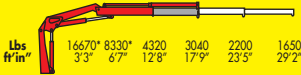
JABCO



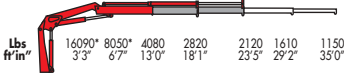
JABCO

800 Series : 54,600 - 187,000 Ft - Lbs

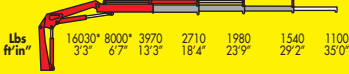
807/1S



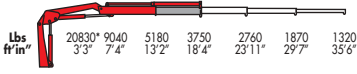
807/2S



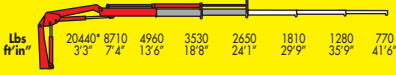
807/3S



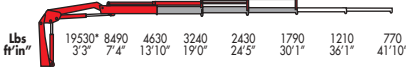
809/1S



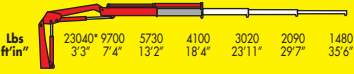
809/2S



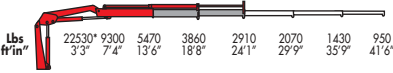
809/3S



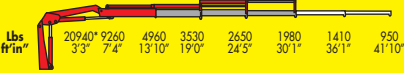
811/1S



811/2S



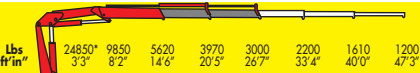
811/3S



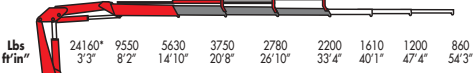
812/1S



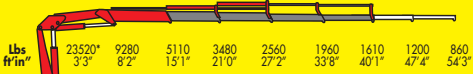
812/2S



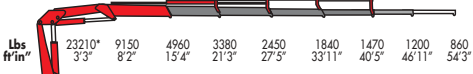
812/3S



812/4S



812/5S



815/1S



Brought to you by:
Robert's Diesel Works Inc.
906 West Gore St.
Orlando, FL 32805
407 246-1597

JABCO

815/2S

Lbs	29320*	11680	6610	4630	3530	2600	1940	1480	
ft/in"	3'3"	8'4"	14'6"	20'5"	26'7"	33'4"	40'1"	47'4"	

815/3S

Lbs	28440*	11240	6310	4370	3260	2600	1940	1480	990
ft/in"	3'3"	8'2"	14'10"	20'8"	26'10"	33'4"	40'1"	47'4"	54'3"

815/4S

Lbs	28000*	11020	6080	4120	3020	2350	1940	1480	990
ft/in"	3'3"	8'2"	15'1"	21'0"	27'2"	33'8"	40'1"	47'4"	54'3"

815/5S

Lbs	27340*	10800	5840	3920	2820	2180	1760	1480	990
ft/in"	3'3"	8'2"	15'4"	21'3"	27'5"	33'11"	40'5"	46'11"	54'3"

815/3S + Jib 2s

Lbs							1215	1069	948	795
ft/in"							42'2"	46'8"	51'6"	56'9"

817/1S

Lbs	34830*	16090	7980	5560					
ft/in"	3'3"	7'1"	14'4"	20'5"					

817/2S

Lbs	33730*	15540	7760	5310	4030				
ft/in"	3'3"	7'1"	14'4"	20'5"	26'7"				

817/3S

Lbs	33070*	15170	7610	5110	3810	3020	2290	1740	1320
ft/in"	3'3"	7'1"	14'4"	20'5"	26'7"	33'0"	39'4"	46'3"	53'2"

817/4S

Lbs	32410*	14860	7430	4890	3570	2780	2290	1740	1320	1010
ft/in"	3'3"	7'1"	14'4"	20'5"	26'7"	33'0"	39'4"	46'3"	53'2"	60'4"

817/5S

Lbs	31750*	14520	7120	4630	3330	2560	2060	1740	1320	1010
ft/in"	3'3"	7'1"	14'7"	20'9"	26'11"	33'4"	39'8"	46'3"	53'2"	60'4"

817/6S

Lbs	30860*	14180	6830	4410	3130	2340	1860	1504	1320	1010
ft/in"	3'3"	7'1"	14'10"	21'0"	27'1"	33'6"	40'0"	46'7"	53'2"	60'4"



JABCO

Brought to you by:
Robert's Diesel Works Inc.
906 West Gore St.
Orlando, Fl. 32805
407 246-1597

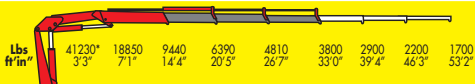
820/1S



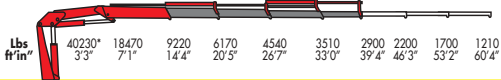
820/2S



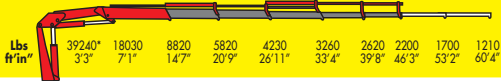
820/3S



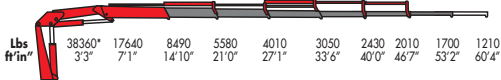
820/4S



820/5S



820/6S



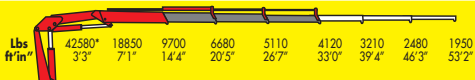
823/1S



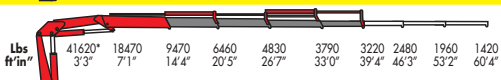
823/2S



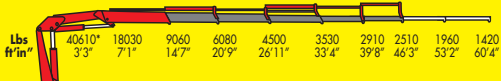
823/3S



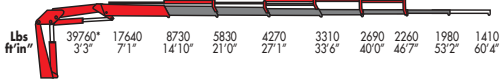
823/4S



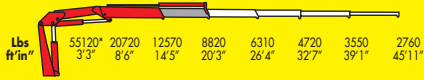
823/5S



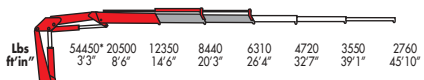
823/6S



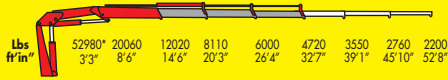
825/1S



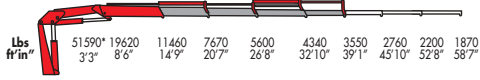
825/2S



825/3S

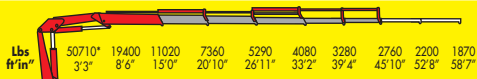
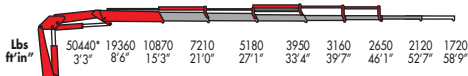
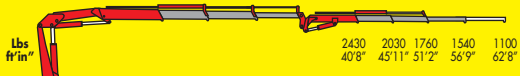
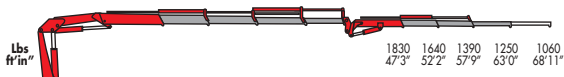
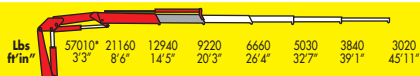
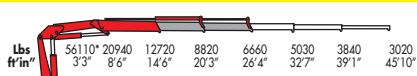
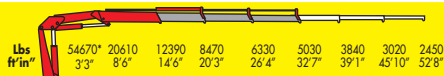
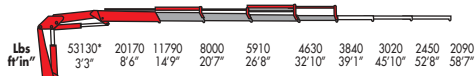
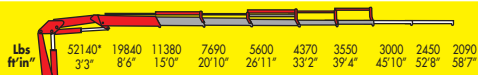
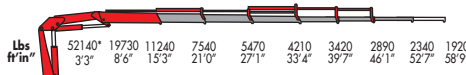
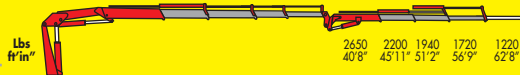
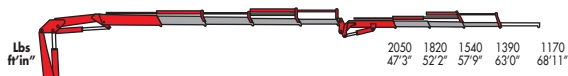
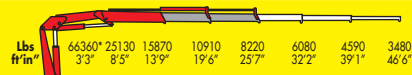
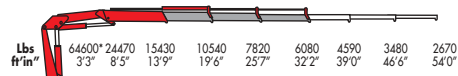
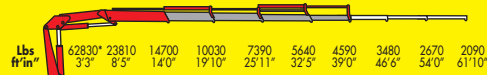
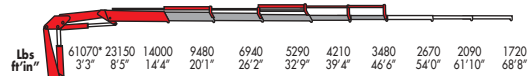


825/4S

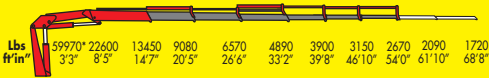


Brought to you by:
 Robert's Diesel Works Inc.
 906 West Gore St.
 Orlando, Fl. 32805
 407 246-1597

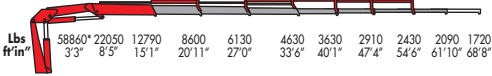
JABCO

825/5S**825/6S****825/3S + Jib 3s****825/4S + Jib 3s****828/1S****828/2S****828/3S****828/4S****828/5S****828/6S****828/3S + Jib 3s****828/4S + Jib 3s****832/2S****832/3S****832/4S****832/5S**

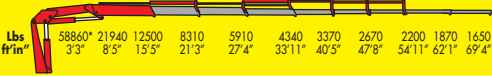
832/6S



832/7S



832/8S



832/4S

+Jib 4s



832/5S

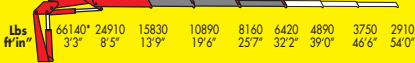
+Jib 4s



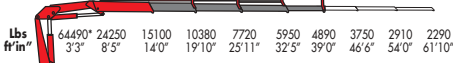
835/2S



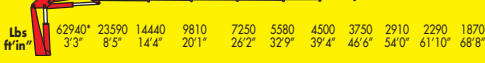
835/3S



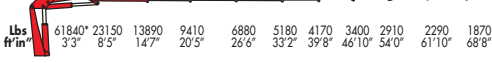
835/4S



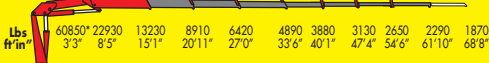
835/5S



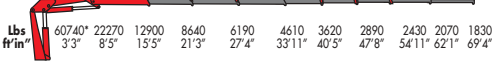
835/6S



835/7S



835/8S



835/4S

+Jib 4s



835/5S

+Jib 4s



*) Theoretical lifting capacity

Brought to you by:
 Robert's Diesel Works Inc.
 906 West Gore St.
 Orlando, Fl. 32805
 407 246-1597

JABCO



807 T model

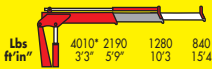


VR 72 model

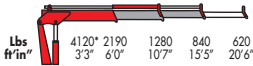
JABCO

VT/VSS Series : 12,300 - 80,000 Ft - Lbs

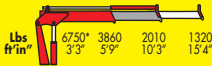
702 T/1S



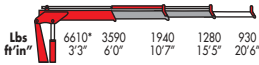
702 T/2S



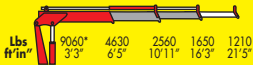
703 T/1S



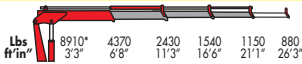
703 T/2S



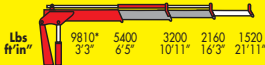
705 T/2S



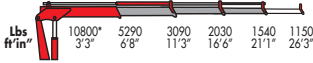
705 T/3S



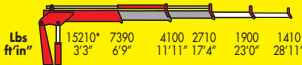
706 T/2S



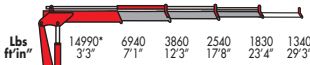
706 T/3S



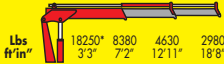
807 T/2S



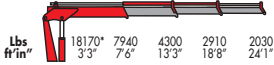
807 T/3S



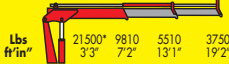
V 8500SS/2S



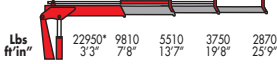
V 8500SS/3S



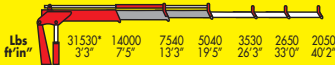
V 10500SS/2S



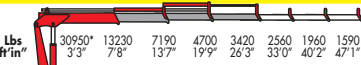
V 10500SS/3S



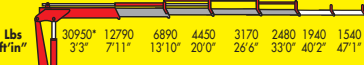
815 T/2S



815 T/3S



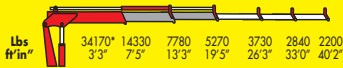
815 T/4S



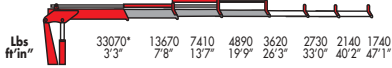
*) Theoretical lifting capacity

T = Single telescopic boom with extensions

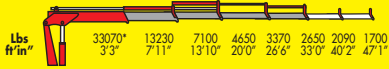
817 T/2S



817 T/3S



817 T/4S

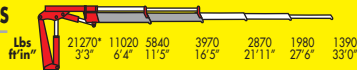


*) Theoretical lifting capacity

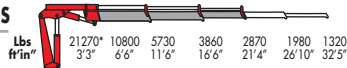


C Series : 69,800 - 253,200 Ft - Lbs

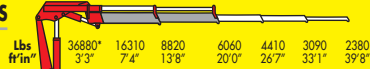
V 10.000C/2S



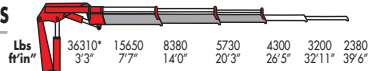
V 10.000C/3S



V 17.000C/2S



V 17.000C/3S



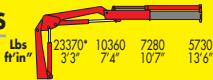
*) Theoretical lifting capacity

C= Retractable jib, for high load application



10000 model

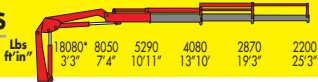
811C/1S



811C/2S



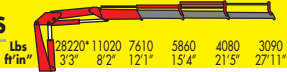
811C/3S



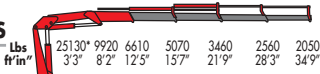
814C/2S



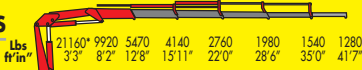
814C/3S



814C/4S



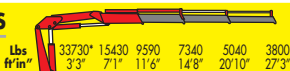
814C/5S



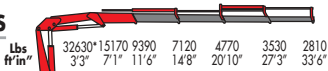
817C/2S



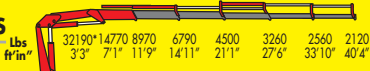
817C/3S



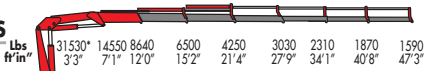
817C/4S



817C/5S



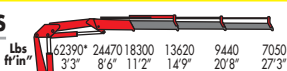
817C/6S



832C/2S



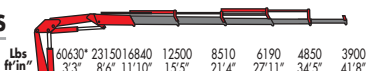
832C/3S



832C/4S



832C/5S



Brought to you by:
 Robert's Diesel Works Inc.
 906 West Gore St.
 Orlando, Fl. 32805
 407 246-1597

JABCO

832C/6S

Lbs	59080*	22600	16420	12020	8110	5860	4520	3590	2980
ft/in"	3'3"	8'6"	11'10"	15'5"	21'8"	28'3"	34'9"	42'0"	49'3"

832C/7S

Lbs	58640*	22050	15430	11510	7760	5560	4250	3350	2760	2340
ft/in"	3'3"	8'6"	12'6"	16'1"	22'0"	28'7"	35'1"	42'4"	49'6"	56'9"

832C/8S

Lbs	57980*	21940	14900	11050	7385	5300	4050	3150	2560	2200	1790
ft/in"	3'3"	8'5"	12'10"	16'5"	22'6"	29'0"	35'7"	42'10"	50'0"	57'3"	64'6"

835C/2S

Lbs	62170*	25130	19550	14710	10420
ft/in"	3'3"	8'6"	10'10"	14'5"	20'4"

835C/3S

Lbs	63710*	24470	18770	14080	9850	7440
ft/in"	3'3"	8'6"	11'2"	14'9"	20'8"	27'3"

835C/4S

Lbs	63050*	23810	18000	13460	9330	6950	5550
ft/in"	3'3"	8'6"	11'6"	15'1"	21'0"	27'7"	34'1"

835C/5S

Lbs	62610*	23150	17370	12940	8880	6530	5180	4190
ft/in"	3'3"	8'6"	11'10"	15'5"	21'4"	27'11"	34'5"	41'8"

835C/6S

Lbs	61070*	22600	16950	12460	8490	6220	4830	3880	3240
ft/in"	3'3"	8'6"	11'10"	15'5"	21'8"	28'3"	34'9"	42'0"	49'3"

835C/7S

Lbs	60630*	22050	15960	11930	8140	5860	4540	3620	3000	2560
ft/in"	3'3"	8'6"	12'6"	16'1"	22'0"	28'7"	35'1"	42'4"	49'6"	56'9"

835C/8S

Lbs	60630*	21940	14900	11050	7385	5300	4050	3150	2560	2200	1980
ft/in"	3'3"	8'5"	12'10"	16'5"	22'6"	29'0"	35'7"	42'10"	50'0"	57'3"	64'6"

*) Theoretical lifting capacity

C= Retractable jib, for high load application



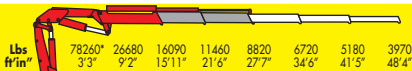
811C model

JABCO

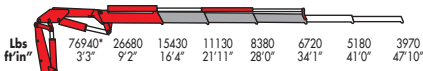
Brought to you by:
 Robert's Diesel Works Inc.
 906 West Gore St.
 Orlando, FL 32805
 407 246-1597

VR Series : 190,000 - 800,000 Ft - Lbs

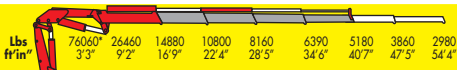
VR 36/2S



VR 36/3S



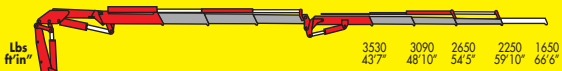
VR 36/4S



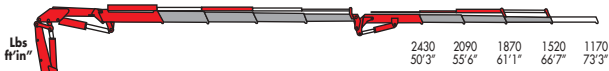
VR 36/2S + Jib 3S



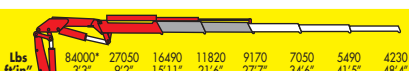
VR 36/3S + Jib 3S



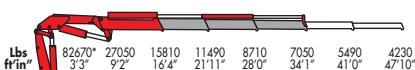
VR 36/4S + Jib 3S



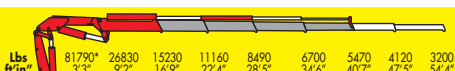
VR 42/2S



VR 42/3S



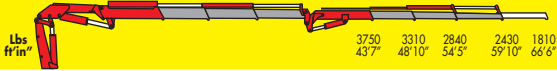
VR 42/4S



VR 42/2S + Jib 3S



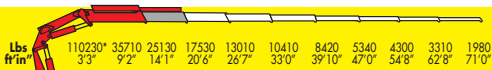
VR 42/3S + Jib 3S



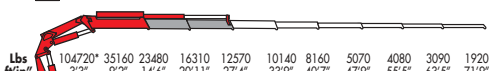
VR 42/4S + Jib 3S



VR 52/1S



VR 52/2S



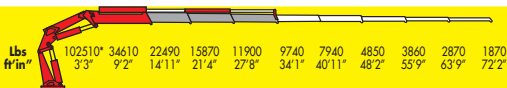
*) Theoretical lifting capacity

VR = Hydraulic turntable, motor rotation

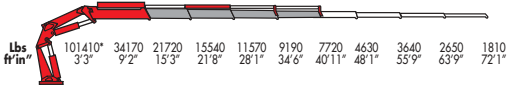
Brought to you by:
Robert's Diesel Works Inc.
906 West Gore St.
Orlando, Fl. 32805
407 246-1597

JABCO

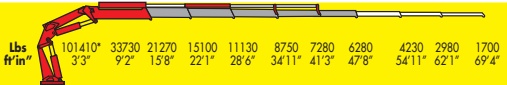
VR 52/3S



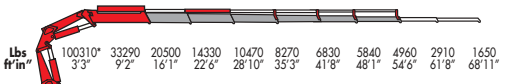
VR 52/4S



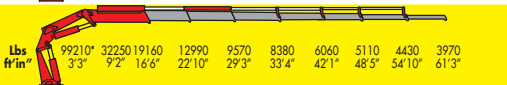
VR 52/5S



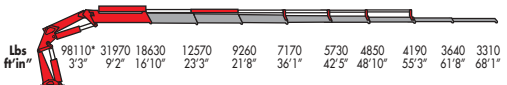
VR 52/6S



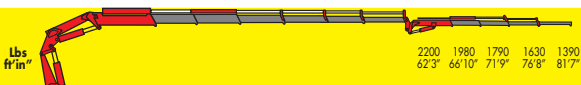
VR 52/7S



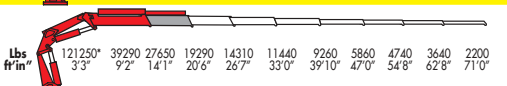
VR 52/8S



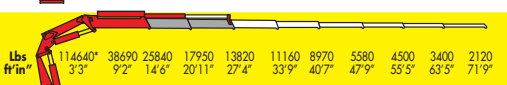
VR 52/6S + Jib 4S



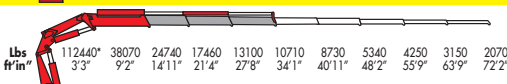
VR 60/1S



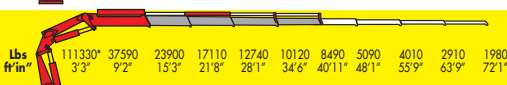
VR 60/2S



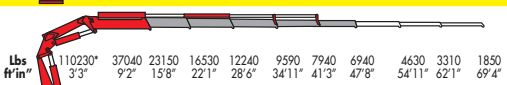
VR 60/3S



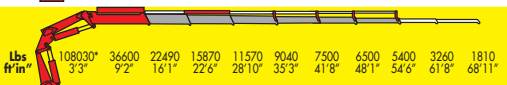
VR 60/4S



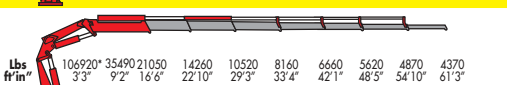
VR 60/5S



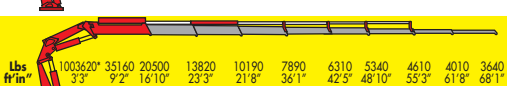
VR 60/6S



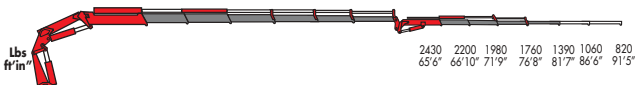
VR 60/7S



VR 60/8S



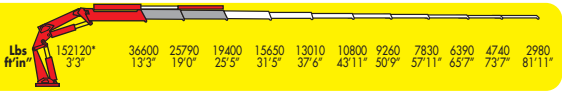
VR 60/6S + Jib 4S



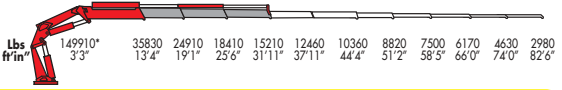
JABCO

Brought to you by:
 Robert's Diesel Works Inc.
 906 West Gore St.
 Orlando, FL 32805
 407 246-1597

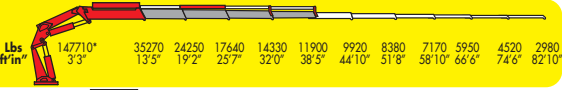
VR 72/2S



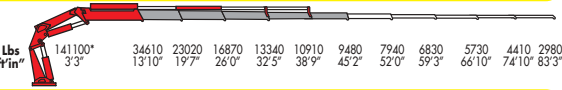
VR 72/3S



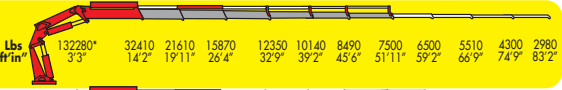
VR 72/4S



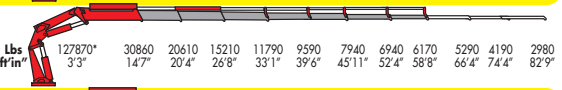
VR 72/5S



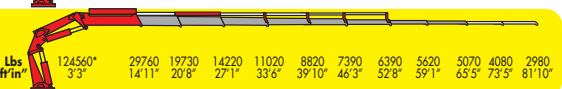
VR 72/6S



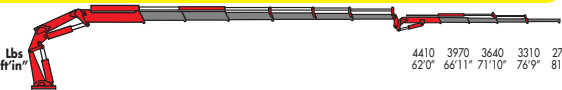
VR 72/7S



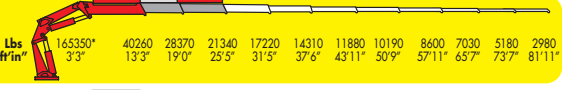
VR 72/8S



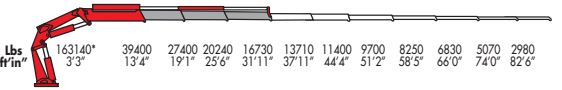
VR 72/6S + Jib 4S



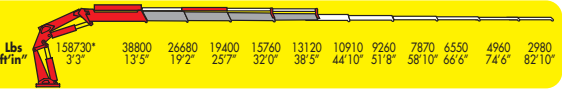
VR 80/2S



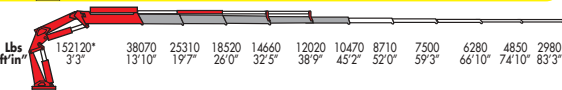
VR 80/3S



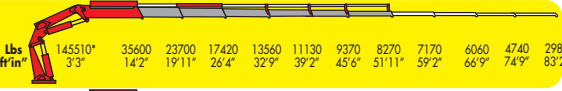
VR 80/4S



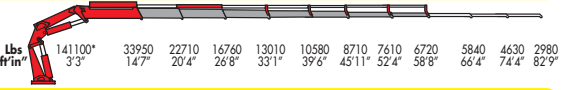
VR 80/5S



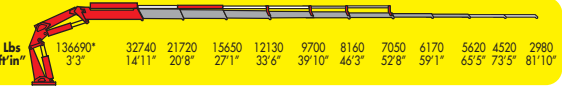
VR 80/6S



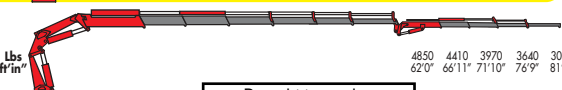
VR 80/7S



VR 80/8S



VR 80/6S + Jib 4S



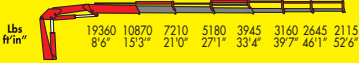
*) Theoretical lifting capacity

Brought to you by:
 Robert's Diesel Works Inc.
 906 West Gore St.
 Orlando, Fl. 32805
 407 246-1597

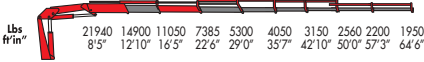


Concrete wall construction

256



328



355J



Brought to you by:
 Robert's Diesel Works Inc.
 906 West Gore St.
 Orlando, Fl. 32805
 407 246-1597



328 model

JABCO

Brought to you by:
 Robert's Diesel Works Inc.
 906 West Gore St.
 Orlando, Fl. 32805
 407 246-1597

WALLBOARD

250/1S



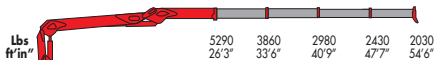
250/2S



330/3S



330/4S



Brought to you by:
Robert's Diesel Works Inc.
906 West Gore St.
Orlando, Fl. 32805
407 246-1597



330 model

Brought to you by:
Robert's Diesel Works Inc.
906 West Gore St.
Orlando, Fl. 32805
407 246-1597

JABCO

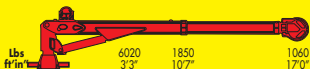


STALLION

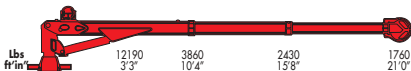
by **JABCO**

STALLION Series

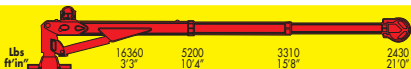
1817



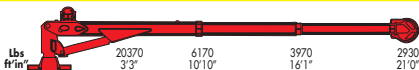
3821



5221



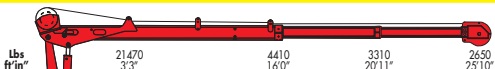
6721



6421



7226



*) Theoretical lifting capacity



JABCO

Brought to you by:
Robert's Diesel Works Inc.
906 West Gore St.
Orlando, FL 32805
407 246-1597

GENERAL LINE

MODELS	LIFTING MOMENT	HORIZ. EXTENSION	MAX. REACH LIFTING CAPACITY	SLEWING ANGLE	WEIGHT	DIMENSION
	Ft • Lbs	Ft	Lbs	°	Lbs	W x H x D (in)
702-1S	13700	15' 8"	840	370	940	73x63x18
702-2S	13300	20' 5"	600	370	990	75x63x20
702K-1S	13500	14' 10"	880	370	910	71x63x18
702K-2S	13400	19' 1"	640	370	970	71x63x20
703-1S	20300	15' 6"	1230	370	1060	78x65x19
703-2S	20000	20' 4"	890	370	1120	78x65x20
703-3S	19400	25' 2"	660	370	1210	78x65x23
704-1S	26500	16' 7"	1590	380	1390	78x73x20
704-2S	26800	21' 9"	1180	380	1500	78x73x20
704-3S	25500	26' 10"	820	380	1690	88x73x21
704-4S	24600	31' 7"	620	380	1760	88x73x24
705-1S	36200	17' 2"	2090	380	1710	80x76x22
705-2S	34600	22' 8"	1490	380	1850	83x76x22
705-3S	33000	27' 6"	1120	380	1930	86x76x22
705-4S	32900	32' 4"	880	380	2030	86x76x25
706-1S	46100	17' 2"	2670	380	2090	88x77x23
706-2S	44600	22' 9"	1920	380	2250	88x77x23
706-3S	43000	28' 4"	1410	380	2380	88x77x23
807-1S	54700	17' 9"	3040	370	2220	91x79x25
807-2S	52800	23' 5"	2120	370	2380	91x79x25
807-3S	52600	29' 2"	1540	370	2550	92x79x25
809-1S	68400	28' 5"	3750	370	2780	93x79x27
809-2S	67000	33' 10"	2650	370	2920	93x79x27
809-3S	64100	39' 8"	1790	370	3020	93x79x27
811-1S	75600	18' 4"	4100	380	2840	93x79x27
811-2S	74100	24' 1"	2910	380	3060	93x79x27
811-3S	68700	30' 1"	1980	380	3220	93x79x27
812-1S	86100	20' 2"	4210	380	3200	99x93x32
812-2S	91900	26' 7"	3000	380	3480	99x93x32
812-3S	89000	33' 4"	2200	380	3750	99x93x32
812-4S	86800	40' 1"	1610	380	3970	99x93x32
812-5S	115000	40' 5"	1470	380	4080	99x93x36
815-1S	101300	14' 3"	4940	380	3640	99x93x32
815-2S	102000	26' 7"	3530	380	3970	99x93x32
815-3S	102700	26' 10"	2600	380	4230	99x93x32
815-4S	102700	40' 1"	1940	380	4450	99x93x32
815-5S	102000	40' 5"	1760	380	5110	99x93x36
815-3S12	93300	51' 6"	950	380	4920	93x99x36
817-1S	114300	20' 5"	5560	410	4700	86x91x39
817-2S	114300	26' 7"	4030	410	5000	86x90x39
817-3S	115700	33' 0"	3020	410	5270	94x91x40
817-4S	115000	39' 4"	2290	410	5530	97x91x40
817-5S	115000	46' 3"	1740	410	5750	99x91x40
817-6S	115700	53' 2"	1540	410	5950	99x91x40
820-1S	141900	20' 5"	6940	410	5030	86x91x39
820-2S	141900	26' 7"	5070	410	5360	86x91x39
820-3S	142100	33' 0"	3830	410	5670	94x91x40
820-4S	142100	39' 4"	2900	410	5950	97x91x40
820-5S	142100	46' 3"	2200	410	6170	99x91x40
820-6S	142100	53' 2"	1700	410	6390	99x91x40

GENERAL LINE

MODELS	LIFTING MOMENT	HORIZ. EXTENSION	MAX. REACH LIFTING CAPACITY	SLEWING ANGLE	WEIGHT	DIMENSION
	Ft • Lbs	Ft	Lbs	°	Lbs	W x H x D (in)
823-1S	146800	20' 5"	7320	410	5090	86x91x39
823-2S	146800	26' 7"	5420	410	5420	90x91x39
823-3S	146800	33' 0"	4170	410	5730	94 x91x40
823-4S	146800	39' 4"	3220	410	6020	97x91x40
823-5S	146800	46' 3"	2510	410	6240	99x91x40
823-6S	146800	53' 2"	1980	410	6460	99x91x40
825-1S	180800	20' 3"	8820	400	6660	99x92x44
825-2S	178700	26' 4"	6310	400	7050	99x92x44
825-3S	173600	32' 7"	4720	400	7360	99x92x44
825-4S	169300	39' 1"	3550	400	7720	99x92x44
825-5S	165600	45' 10"	2760	400	8020	99x92x44
825-6S	165600	52' 7"	2120	400	8230	99x92x48
825-3SJ3	157700	56' 10"	1540	400	8580	99x96x52
825-4SJ3	153300	63' 2"	1250	400	8910	99x96x52
828-1S	187300	20' 3"	9220	400	6770	99x92x44
828-2S	184400	26' 4"	6660	400	7170	99x92x44
828-3S	179400	32' 7"	5030	400	7470	99x92x44
828-4S	174300	39' 1"	3840	400	7830	99x92x44
828-5S	171400	45' 10"	3000	400	8140	99x92x44
828-6S	171400	52' 7"	2340	400	8340	99x92x48
828-3SJ3	163500	56' 10"	1720	400	8690	99x96x52
828-4SJ3	159100	63' 2"	1390	400	9020	99x96x52
832-2S	217700	25' 7"	8220	400	7610	99x93x47
832-3S	211900	32' 2"	6080	400	8110	99x93x47
832-4S	206100	39' 0"	4590	400	8550	99x93x47
832-5S	200400	46' 6"	3480	400	8930	99x93x47
832-6S	196700	54' 0"	2670	400	9260	99x95x47
832-7S	193100	61' 10"	2090	400	9520	99x99x49
832-8S	193100	69' 4"	1650	400	9810	100x101x52
832-4SJ4	219200	71' 6"	1230	400	11510	100x102x47
832-5SJ4	219200	78' 9"	750	400	11880	101x102x47
835-2S	224200	25' 7"	8600	400	7720	99x93x47
835-3S	218400	32' 2"	6420	400	8220	99x93x47
835-4S	213400	39' 0"	4890	400	8660	99x93x47
835-5S	208300	46' 6"	3750	400	9040	99x93x47
835-6S	204700	54' 0"	2910	400	9370	99x95x47
835-7S	201100	61' 10"	2290	400	9630	99x99x49
835-8S	200400	69' 4"	1830	400	9920	100x101x52
835-4SJ4	224200	71' 6"	1340	400	11550	100x102x47
835-5SJ4	224200	78' 9"	820	400	11930	101x102x47
VR36-2S	256800	27' 7"	8820	400	8970	99x94x43
VR36-3S	252400	34' 1"	6720	400	9370	99x94x43
VR36-4S	249500	40' 7"	5180	400	9700	99x95x43
VR36-2SJ3	256800	53' 9"	2270	400	10300	99x103x45
VR36-3SJ3	252400	59' 10"	2250	400	10690	99x103x45
VR36-4SJ3	249500	66' 7"	1520	400	11020	99x105x45
VR42-2S	263300	27' 7"	9170	400	9080	99x94x43
VR42-3S	258900	34' 1"	7050	400	9480	99x94x43
VR42-4S	255300	40' 7"	5470	400	9810	99x95x43
VR42-2SJ3	263300	53' 9"	2450	400	10410	99x103x45
VR42-3SJ3	258900	59' 10"	2430	400	10800	99x103x45
VR42-4SJ3	255300	66' 7"	1650	400	11130	99x105x45
VR52-1S	361600	20' 6"	17530	continua	12610	101x98x65
VR52-2S	343600	27' 4"	12570	continua	13340	101x98x65

JABCO

Brought to you by:
 Robert's Diesel Works Inc.
 906 West Gore St.
 Orlando, Fl. 32805
 407 246-1597

GENERAL LINE

MODELS	LIFTING MOMENT	HORIZ. EXTENSION	MAX. REACH LIFTING CAPACITY	SLEWING ANGLE	WEIGHT	DIMENSION
	Ft • Lbs	Ft	Lbs	°	Lbs	W x H x D (in)
VR52-3S	336300	34' 1"	9740	continua	14040	101x98x65
VR52-4S	332700	40' 11"	7720	continua	14660	101x98x65
VR52-5S	332700	47' 8"	6280	continua	15100	101x98x65
VR52-6S	329100	54' 6"	4960	continua	15590	101x98x65
VR52-7S	325500	61' 3"	3970	continua	16530	101x98x65
VR52-8S	321900	68' 1"	3310	continua	16870	101x98x65
VR52-6SJ4	321900	81' 7"	1390	continua	17970	101x98x65
VR60-1S	397800	20' 6"	19290	continua	12610	101x98x65
VR60-2S	376100	27' 4"	13820	continua	13340	101x98x65
VR60-3S	368900	34' 1"	10710	continua	14040	101x98x65
VR60-4S	365300	40' 11"	8490	continua	14660	101x98x65
VR60-5S	361600	47' 8"	6940	continua	15100	101x98x65
VR60-6S	354400	54' 6"	5400	continua	15590	101x98x65
VR60-7S	350800	61' 3"	4370	continua	16530	101x98x65
VR60-8S	339900	68' 1"	3640	continua	16870	101x98x65
VR60-6SJ4	397800	81' 7"	1390	continua	17970	101x98x65
VR72-2S	499100	25' 5"	19400	continua	15870	101x98x78
VR72-3S	484600	31' 11"	15210	continua	16640	101x98x78
VR72-4S	462900	38' 5"	11900	continua	17420	101x98x78
VR72-5S	455700	45' 2"	9480	continua	18080	101x98x78
VR72-6S	434000	51' 11"	7500	continua	18740	101x98x78
VR72-7S	419500	58' 8"	6170	continua	19290	101x98x78
VR72-8S	408700	65' 5"	5070	continua	19620	101x98x78
VR72-6SJ4	491800	81' 8"	2760	continua	22490	101x98x78
VR80-2S	542500	25' 5"	21340	continua	15870	101x98x78
VR80-3S	535200	31' 11"	16730	continua	16640	101x98x78
VR80-4S	520800	38' 5"	13120	continua	17420	101x98x78
VR80-5S	499100	45' 2"	10470	continua	18080	101x98x78
VR80-6S	477400	51' 11"	8270	continua	18740	101x98x78
VR80-7S	462900	58' 8"	6720	continua	19290	101x98x78
VR80-8S	448400	65' 5"	5620	continua	19620	101x98x78
VR80-6SJ4	542500	81' 8"	3090	continua	22490	101x98x78
702T-1S	13200	10' 3"	1280	370	980	71x66x17
702T-2S	13500	15' 5"	840	370	1080	71x66x17
703T-1S	22100	10' 3"	2010	370	980	76x67x16
703T-2S	21700	15' 5"	1280	370	1080	76x67x16
705T-2S	29700	16' 3"	1650	380	1420	75x80x18
705T-3S	29200	21' 1"	1150	380	1530	75x80x18
706T-2S	36200	16' 7"	1920	370	1840	83x81x20
706T-3S	36200	21' 0"	1410	370	1980	84x83x20
807T-2S	49900	17' 4"	2710	380	2070	79x90x20
807T-3S	49200	23' 4"	1830	380	2250	79x91x22
8500SS-2S	59900	18' 8"	2980	360	2740	92x89x26
8500SS-3S	59900	24' 1"	2030	360	2850	92x89x26
10500SS-2S	72300	19' 2"	3750	360	3750	97x93x27
10500SS-3S	75200	25' 9"	2870	360	3970	97x93x27
815T-2S	103400	19' 5"	5040	380	3440	99x98x31
815T-3S	101300	26' 3"	3420	380	3730	99x98x31
815T-4S	101300	33' 0"	2480	380	3970	99x99x31
817T-2S	112100	19' 5"	5270	380	3530	99x98x31
817T-3S	108500	26' 3"	3620	380	3840	99x98x31
817T-4S	108500	33' 0"	2650	380	4080	99x99x31

*.) Top Seat

Brought to you by:
Robert's Diesel Works Inc.
906 West Gore St.
Orlando, Fl. 32805
407 246-1597

JABCO

GENERAL LINE

MODELS	LIFTING MOMENT Ft • Lbs	HORIZ. EXTENSION Ft	MAX. REACH LIFTING CAPACITY Lbs	SLEWING ANGLE °	WEIGHT Lbs	DIMENSION W x H x D (in)
10000C-2S	69800	16' 5"	3970	380	2840	91x81x25
10000C-3S	69800	21' 4"	2870	380	3090	91x81x25
17000C-2S	121500	20' 0"	6060	380	4960	96x91x31
17000C-3S	119100	26' 5"	4300	380	5220	96x91x31
811C-1S	76700	13' 6"	5730	380	2760	93x79x27
811C-2S	76700	19' 3"	3860	380	2980	93 x79x27
811C-3S	76700	25' 3"	2200	380	3170	94x79x27
814C-2S	95500	21' 2"	4410	380	3810	98x93x32
814C-3S	95500	27' 11"	3090	380	4080	98x93x32
814C-4S	95500	34' 9"	2050	380	4280	98x93x32
814C-5S	95500	41' 7"	1280	380	4370	99x93x32
817C-2S	112800	20' 10"	5290	380	4850	98x91x40
817C-3S	112800	27' 3"	3800	380	5110	98x91x40
817C-4S	112800	33' 6"	2810	380	5380	98x91x40
817C-5S	112800	40' 4"	2120	380	5600	98x91x40
817C-6S	112800	47' 3"	1590	380	5110	98x91x40
832C-2S	206100	20' 4"	9960	400	7430	99x93x47
832C-3S	206100	27' 3"	7050	400	7940	99x93x47
832C-4S	206100	34' 1"	5200	400	8380	99x93x47
832C-5S	206100	41' 8"	3900	400	8750	99x93x47
832C-6S	206100	49' 3"	2980	400	9080	99x93x47
832C-7S	206100	56' 9"	2340	400	9350	99x93x49
832C-8S	206100	64' 8"	1800	400	9630	100x93x52
835C-2S	211200	20' 4"	10420	400	7430	99x93x47
835C-3S	211200	27' 3"	7440	400	7940	99x93x47
835C-4S	211200	34' 1"	5550	400	8380	99x93x47
835C-5S	211200	41' 8"	4190	400	8750	99x93x47
835C-6S	211200	49' 3"	3240	400	9080	99x93x47
835C-7S	211200	56' 9"	2560	400	9350	99x93x49
835C-8S	211200	64' 8"	1980	400	9630	100x93x52

CONCRETE WALL CONSTRUCTION

256	165100	52' 6"	2120	400	8070	99x92x48
328	192700	64' 8"	1950	400	9300	100x101x52
355J	192400	60' 4"	2000	400	10470	99x101x48

WALLBOARD

250-1S	164200	33' 4"	4740	400	8050	99x101x48
250-2S	164200	40' 6"	3480	400	8380	99x101x48
330-3S	179400	47' 7"	3090	400	9610	99x101x48
330-4S	179400	54' 6"	2380	400	10030	99x101x48

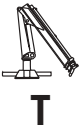
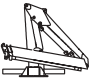
STALLION

1817	19500	17' 0"	1060	375	990	145x49x17
3821	39800	21' 0"	1760	375	1280	142x46x17
5221	53500	21' 0"	2430	375	1320	142x49x17
6721	66800	21' 0"	2930	370	2200	190x60x21
6421	64400	21' 5"	2870	380	2470	189x92x23
7226	70900	25' 10"	2650	380	2690	219x92x23

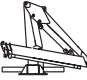

JABCO

Brought to you by:
Robert's Diesel Works Inc.
906 West Gore St.
Orlando, FL 32805
407 246-1597


MARINE F/M

Crane model			max. outreach ft in	Outreach lifting cap. Lbs		Rot. (°)	
				H1B3	H2B3		
	V702	TF/M	1S	10' 3"	1280	1080	370
	V702	TF/M	2S	15' 5"	840	710	370
	V703	TF/M	1S	10' 4"	2010	1700	370
	V703	TF/M	2S	15' 5"	1280	1080	370
	V705	TF/M	2S	16' 3"	1650	1410	380
	V705	TF/M	3S	21' 1"	1210	970	380
	V807	TF/M	2S	17' 4"	2710	2310	380
	V807	TF/M	3S	23' 4"	1830	1570	380
	V8500SS	F/M	2S	18' 8"	2980	2540	360
	V8500SS	F/M	3S	24' 1"	2030	1720	360
	815	TF/M	2S	19' 5"	5040	3530	380
	815	TF/M	3S	26' 3"	3420	2390	380
	815	TF/M	4S	33' 0"	2480	1740	380
	817	TF/M	2S	19' 5"	5270	3700	380
	817	TF/M	3S	26' 3"	3620	2530	380
	817	TF/M	4S	33' 0"	2650	1870	380
	V703	F/M	1S	15' 7"	1230	1060	370
	V703	F/M	2S	20' 4"	890	750	370
	V703	F/M	3S	25' 2"	660	550	370
	V704	F/M	1S	16' 7"	1590	1340	380
	V704	F/M	2S	21' 9"	1180	990	380
	V704	F/M	3S	26' 10"	820	710	380
	V704	F/M	4S	31' 7"	620	430	380
	V706	F/M	1S	17' 2"	2670	1870	380
	V706	F/M	2S	22' 9"	1920	1630	380
	V706	F/M	3S	28' 4"	1410	1190	380
	V809	F/M	1S	18' 4"	3750	3200	380
	V809	F/M	2S	24' 1"	2650	2250	380
	V809	F/M	3S	30' 1"	1790	1520	380
	V811	F/M	1S	18' 4"	4100	3480	380
	V811	F/M	2S	24' 1"	2910	2470	380
	V811	F/M	3S	30' 1"	1980	1700	380
	812	F/M	1S	20' 2"	4210	2950	380
	812	F/M	2S	26' 7"	3000	2100	380
	812	F/M	3S	33' 4"	2200	1540	380
	812	F/M	4S	40' 1"	1610	1130	380
	812	F/M	5S	40' 5"	1470	1030	380
	815	F/M	1S	20' 2"	4940	3460	380
	815	F/M	2S	26' 7"	3530	2470	380
	815	F/M	3S	33' 4"	2600	1820	380
815	F/M	4S	40' 1"	1940	1360	380	
815	F/M	5S	46' 11"	1760	1230	380	
817	F/M	1S	20' 5"	5560	3890	410	
817	F/M	2S	26' 7"	4030	2820	410	
817	F/M	3S	33' 0"	3020	2110	410	
817	F/M	4S	39' 4"	2290	1600	410	
817	F/M	5S	46' 3"	1740	1220	410	
817	F/M	6S	53' 2"	1540	1080	410	
818	F/M	1S	20' 5"	5850	4100	410	
818	F/M	2S	26' 7"	4320	3020	410	
818	F/M	3S	33' 2"	3320	2320	410	
818	F/M	4S	39' 4"	2560	1790	410	
818	F/M	5S	46' 3"	1980	1390	410	
818	F/M	6S	53' 2"	1540	1080	410	
820	F/M	1S	20' 5"	6940	4850	410	
820	F/M	2S	26' 7"	5070	3530	410	
820	F/M	3S	33' 2"	3800	2920	410	
820	F/M	4S	39' 4"	2900	2030	410	

F = Fix mounted base
M = Marine crane for ocean vessel or dock application
VR = Hydraulic turntable, motor rotation

Crane model				max. outreach ft in	Outreach lifting cap. Lbs		Rot. (°)	
					H1B3	H2B3		
 A	820	F/M	5S	46' 3"	2200	1540	410	
	820	F/M	6S	53' 2"	1700	1170	410	
	823	F/M	1S	20' 5"	6310	5360	410	
	823	F/M	2S	26' 7"	4720	4010	410	
	823	F/M	3S	33' 0"	3550	3020	410	
	823	F/M	4S	39' 4"	2760	2340	410	
	823	F/M	5S	46' 3"	2120	1810	410	
	823	F/M	6S	53' 2"	1980	1390	410	
	V825	F/M	1S	20' 3"	8820	6170	400	
	V825	F/M	2S	26' 4"	6310	5360	400	
	V825	F/M	3S	32' 7"	4720	4010	400	
	V825	F/M	4S	39' 1"	3550	3020	400	
	V825	F/M	5S	45' 10"	2760	2340	400	
	V825	F/M	6S	52' 7"	2120	1480	400	
	V825	F/M	3SJ3	56' 9"	1540	1080	400	
	V825	F/M	4SJ3	63' 0"	1250	870	400	
	V828	F/M	1S	20' 3"	9220	6170	400	
	V828	F/M	2S	26' 4"	6660	4660	400	
	V828	F/M	3S	32' 7"	5030	3520	400	
	V828	F/M	4S	39' 1"	3840	2690	400	
	V828	F/M	5S	45' 10"	3000	2100	400	
	V828	F/M	6S	53' 2"	2340	1640	400	
	V828	F/M	3SJ3	56' 9"	1720	1200	400	
	V828	F/M	4SJ3	63' 0"	1390	970	400	
	 VR	VR36	F/M	2S	27' 7"	8820	7500	400
		VR36	F/M	3S	34' 1"	6720	5710	400
		VR36	F/M	4S	40' 8"	5180	4410	400
		VR36	F/M	2SJ3	53' 9"	2270	1920	400
VR36		F/M	3SJ3	59' 10"	2250	1900	400	
VR36		F/M	4SJ3	66' 7"	1520	1280	400	
VR42		F/M	2S	27' 7"	10140	7800	400	
VR42		F/M	3S	34' 1"	7720	6000	400	
VR42		F/M	4S	40' 8"	5950	4650	400	
VR42		F/M	2SJ3	53' 9"	2600	2070	400	
VR42		F/M	3SJ3	59' 10"	2580	2050	400	
VR42		F/M	4SJ3	66' 7"	1740	1410	400	
VR52		F/M	1S	20' 6"	17530	14020		
VR52		F/M	2S	27' 4"	12570	10050		
VR52		F/M	3S	34' 1"	9740	7780		
VR52		F/M	4S	40' 11"	7720	6170		
VR52		F/M	5S	47' 8"	6280	5030		
VR52		F/M	6S	54' 6"	4960	3970		
VR52		F/M	7S	61' 3"	3970	3170		
VR52		F/M	8S	68' 1"	3310	2650		
VR52		F/M	6SJ4	81' 7"	1390	970		
VR60		F/M	1S	20' 6"	19290	15430		
VR60		F/M	2S	27' 4"	13820	11050		
VR60		F/M	3S	34' 1"	10710	8550		
VR60		F/M	4S	40' 11"	8490	6790		
VR60		F/M	5S	47' 8"	6940	5560		
VR60		F/M	6S	54' 6"	5400	4320		
VR60		F/M	7S	61' 3"	4370	3480		
VR60	F/M	8S	68' 1"	3640	2910			
VR60F/M	6SJ4		91' 2"	820	570			
VR72	F/M	2S	25' 5"	19400	15520			
VR72	F/M	3S	32' 10"	15210	12170			
VR72	F/M	4S	38' 5"	11900	11460			
VR72	F/M	5S	45' 2"	9480	7580			

CONTINUA - ENDLESS

Crane model				Outreach lifting cap. Lbs		Rot. (°)	
		max. outreach ft in		H1B3	H2B3		
 VR	VR72	F/M	6S	51' 11"	7500	6000	CONTINUA - ENDLESS
	VR72	F/M	7S	58' 9"	6170	4940	
	VR72	F/M	8S	65' 5"	5070	4060	
	VR72	F/M	6SJ4	81' 8"	2760	1930	
	VR80	F/M	2S	25' 5"	21340	17060	
	VR80	F/M	3S	32' 10"	16730	13380	
	VR80	F/M	4S	38' 5"	13120	10490	
	VR80	F/M	5S	45' 2"	10470	8380	
	VR80	F/M	6S	51' 11"	8270	6610	
	VR80	F/M	7S	58' 9"	6720	5380	
	VR80	F/M	8S	65' 5"	5620	4500	
	VR80	F/M	6SJ4	81' 8"	3090	2160	

JT



JT250	F/M	1S	34' 5"	4190	3570
JT250	F/M	2S	41' 8"	3090	2620

SC



SC1817	F/M		17' 0"	1060	900
SC3821	F/M		21' 0"	1760	1500
SC5221	F/M		21' 0"	2430	2070
SC6721	F/M		21' 0"	2930	2490
SC6421	F/M		21' 5"	2870	2450
SC7226	F/M		25' 10"	2650	2250

F = Fix mounted base

M = Marine crane for ocean vessel or dock application

VR = Hydraulic turntable, motor rotation





Concrete Wall Construction



WALLBOARD



STALLION



Brought to you by:
Robert's Diesel Works Inc.
906 West Gore St.
Orlando, Fl. 32805
407 246-1597